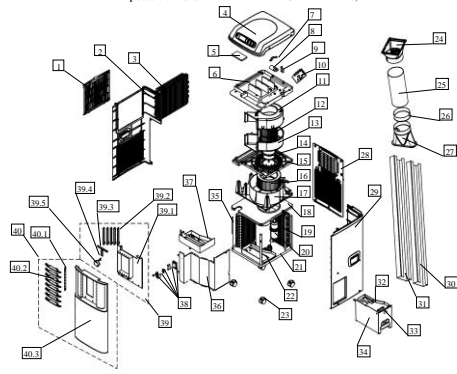


Exploded View Parts for Model MPA1-09CRN2 220-240V,50Hz



No.	Part Name	Quantity	Sub code	Remark
1	Air filter assy	1	3069411001	
2	Left shell board	1	3070911010	
3	Evaporator	1	3069411019	
4	Top cover assy	1	3070911002	
5	Display board	1	3070911001	
5.1	Indoor temp sensor	1	3069411004	
5.2	Evaporator temp sensor	1	3069411003	
6	Electric part installation board	1	3070911012	
7	Capacitor clamp	1	3040911211	
8	Compressor capacitor	1	10309121820	
9	Motor capacitor	1	3040911212	
10	Main control board	1	3040911213	
11	Indoor volute shell I	1	3040911218	
12	Indoor centrifugal fan	1	3040911215	
13	Indoor volute shell II	1	3040911219	
14	Fan motor	1	3040911214	
15	Outdoor volute shell cover	1	30709441004	
16	Outdoor centrifugal fan	1	3040911216	
17	Outdoor volute shell	1	3040911221	
18	Indoor-outdoor separating board	1	3040911217	
19	Condenser	1	3069411020	
20	Compressor	1	3069411009	PG160X1C-4HR2
21	Chassis	1	30709411010	
22	Base for water tank	1	3040911235	
23	Universal wheel	4	30709411011	
24	Fixing tie-in for outdoor wind discharge	1	3040911225	
25	Outdoor wind discharging pipe	1	3040911226	
26	Mid-tie-in for outdoor wind discharge	1	3040911227	
27	Air discharger	1	3040911228	
28	Rear board for air discharge	1	3069411010	
29	Right shell board	1	3070911013	
30	Window sealing board I	1	3069411004	
31	Window sealing board II	1	3069411005	
32	Tank cover	1	3040911232	
33	Water stopper on tank	1	3069411012	
34	Water tank	1	3069411013	
35	Supporting bar	4	30709411015	
36	Pre-cooling water pan	1	3070911014	
37	Separating board for tank	1	3040911243	
38	Water depth controller switch	1	30709411013	
39	Indoor air-out frame assy	1	30709411012	
39.1	Indoor air-out frame	1	3069411006	
39.2	Vertical louver	5	3069411007	
39.3	Connector for vertical louver	1	3069411008	
39.4	Swing switch	1	3069411009	
39.5	Swing motor	1	30709411014	
40	Front panel assy	1	3069411016	
40.1	Connector for horizontal louver	1	3069411010	
40.2	Horizontal louver	8	3069411011	
40.3	Front panel	1	3069411012	
41	Transformer	1	10309121233	
42	Remotor controller	1	3070911003	