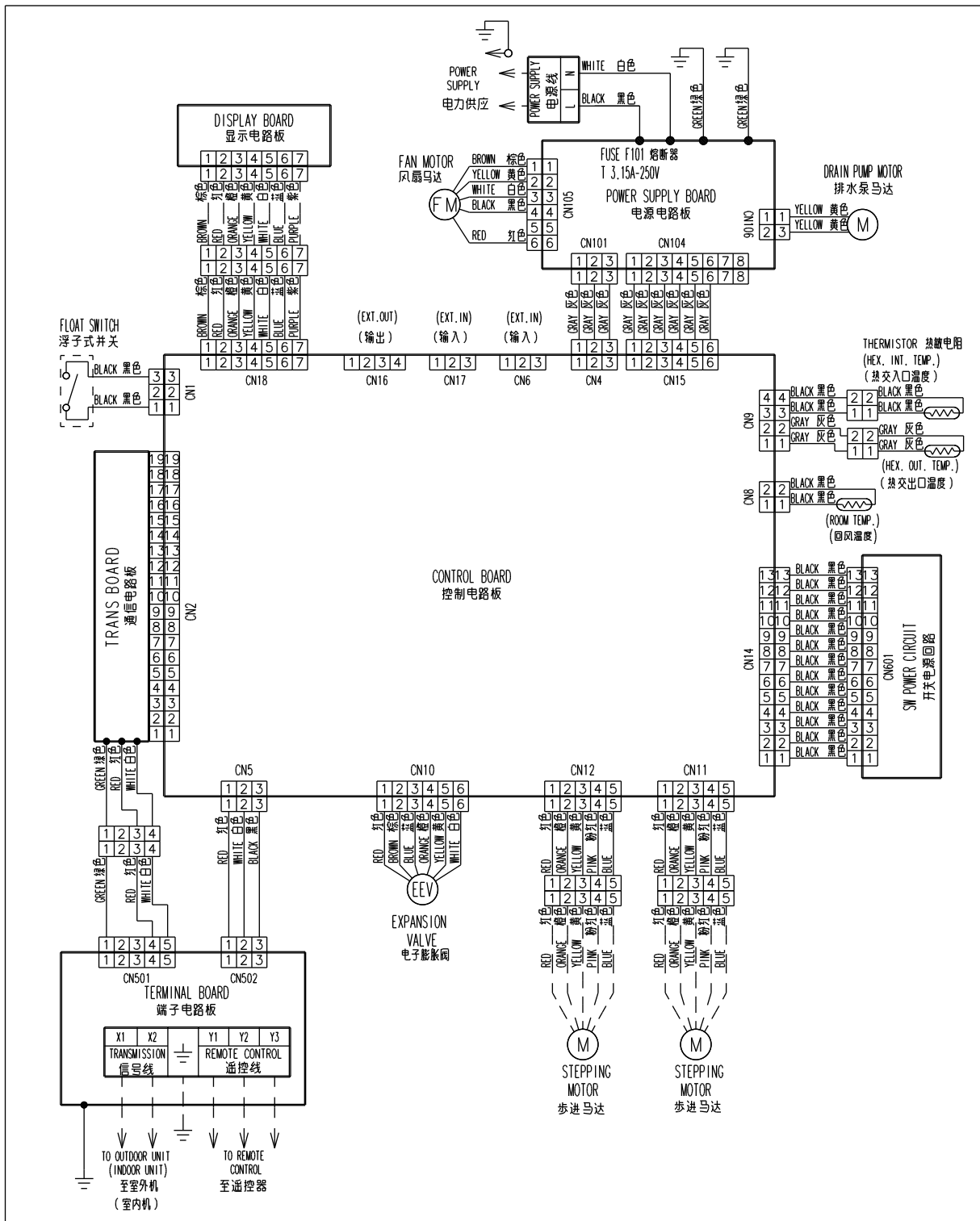


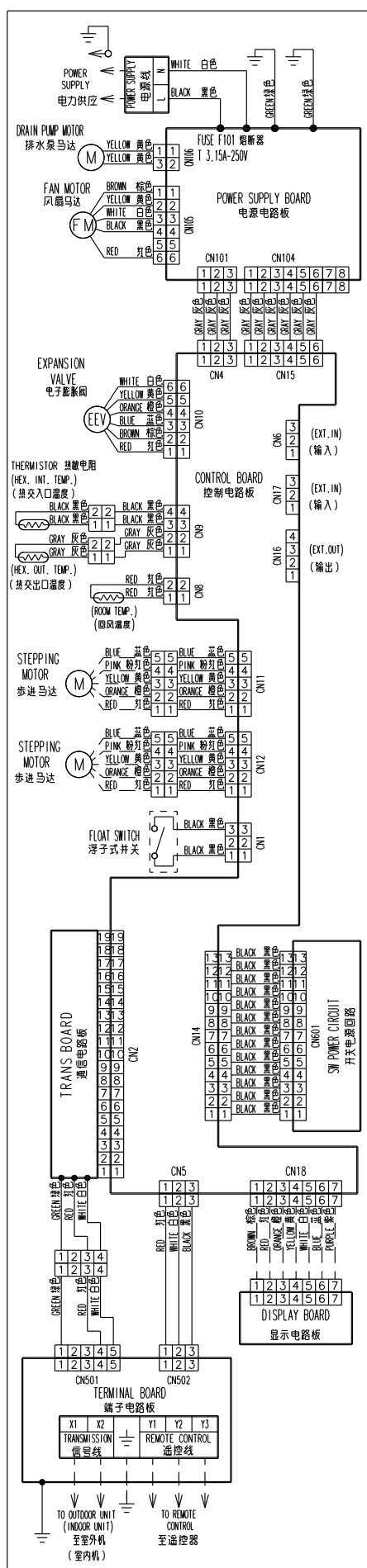
## 5-2 WIRING DIAGRAM

### 5-2-1 Indoor Unit

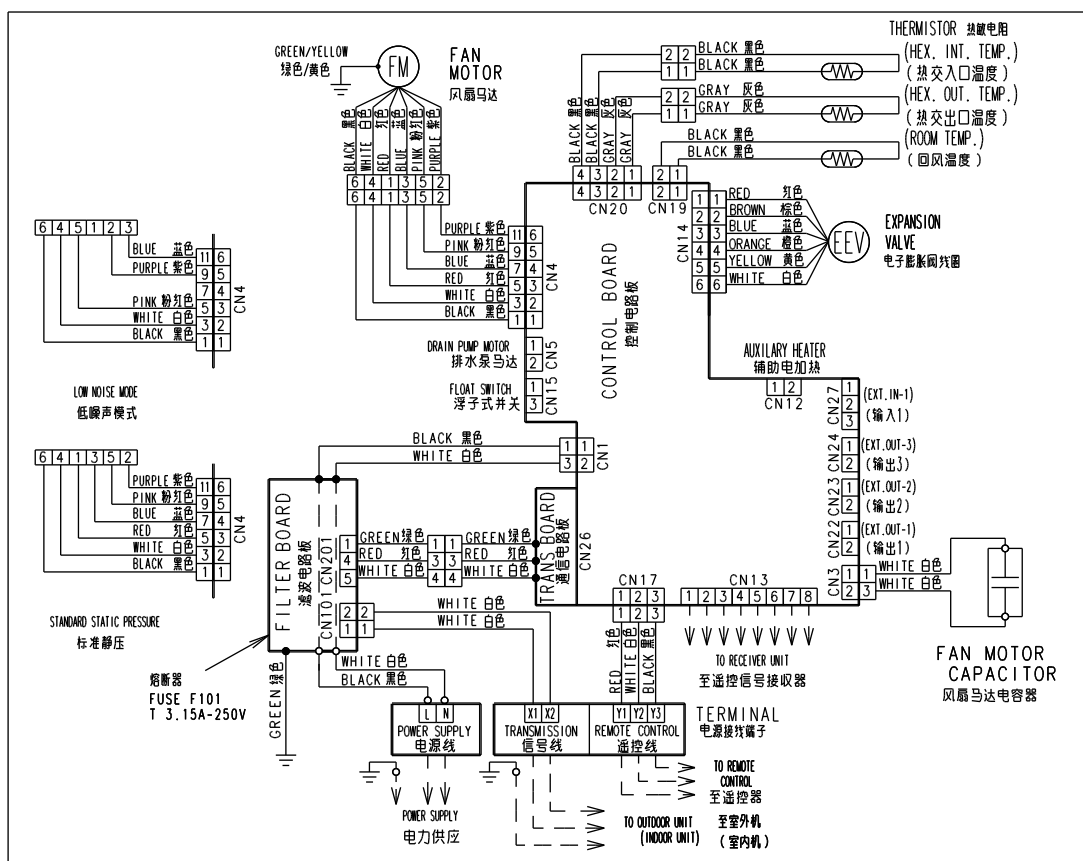
MODELS : AUXB07, AUXB09, AUXB12, AUXB14, AUXB18, AUXB24



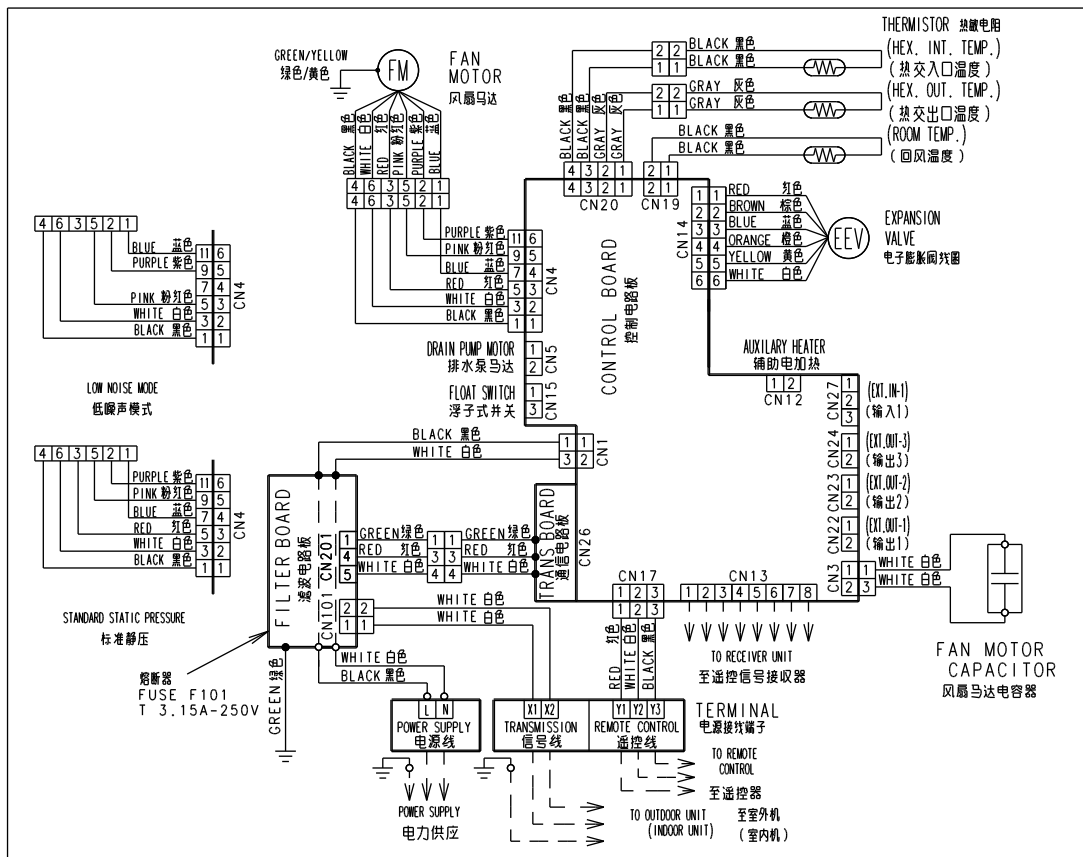
# MODELS : AUXD18, AUXD24, AUXA30, AUXA36, AUXA45, AUXA54



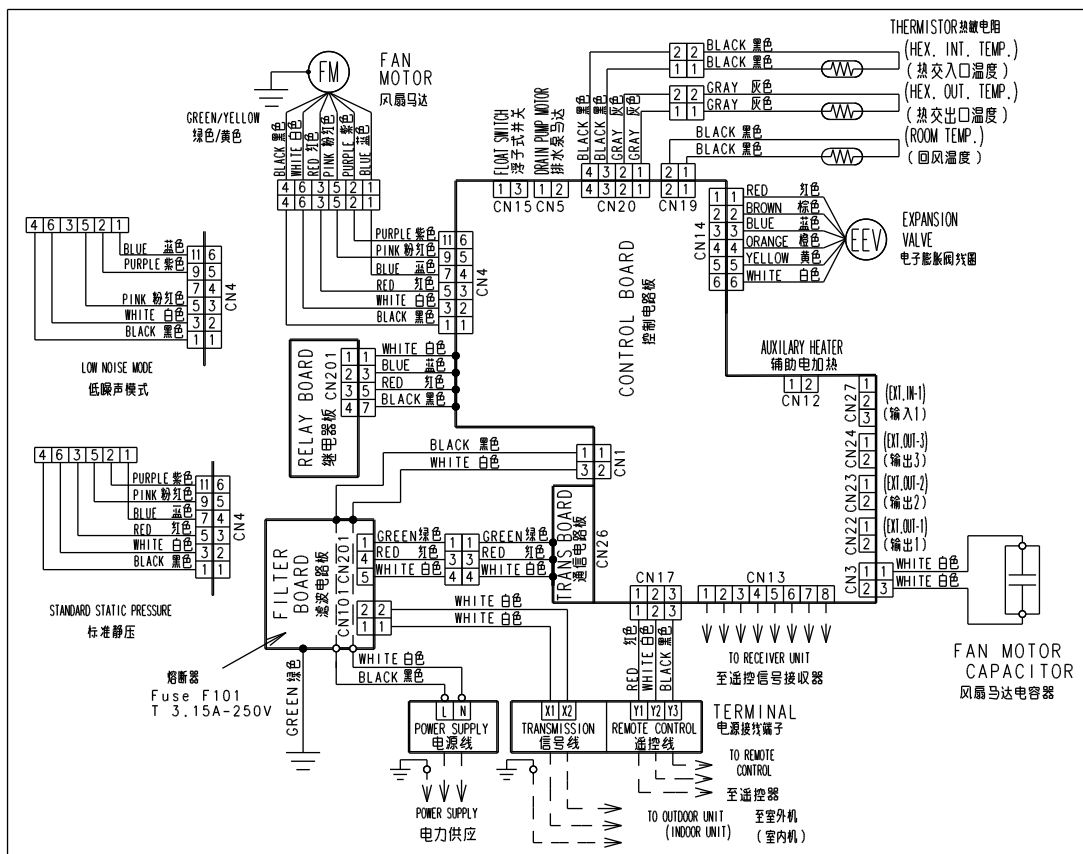
**MODELS : ARXB07, ARXB09, ARXB12, ARXB14, ARXB18**



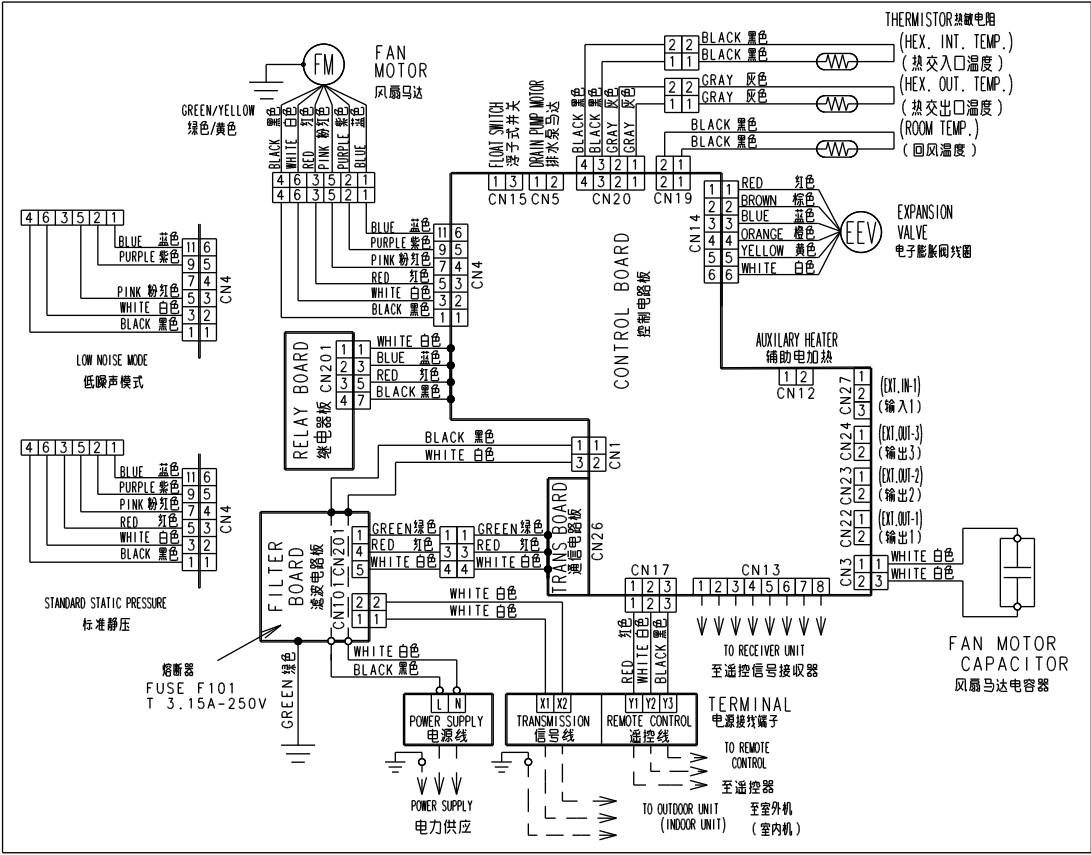
**MODEL : ARXB24**



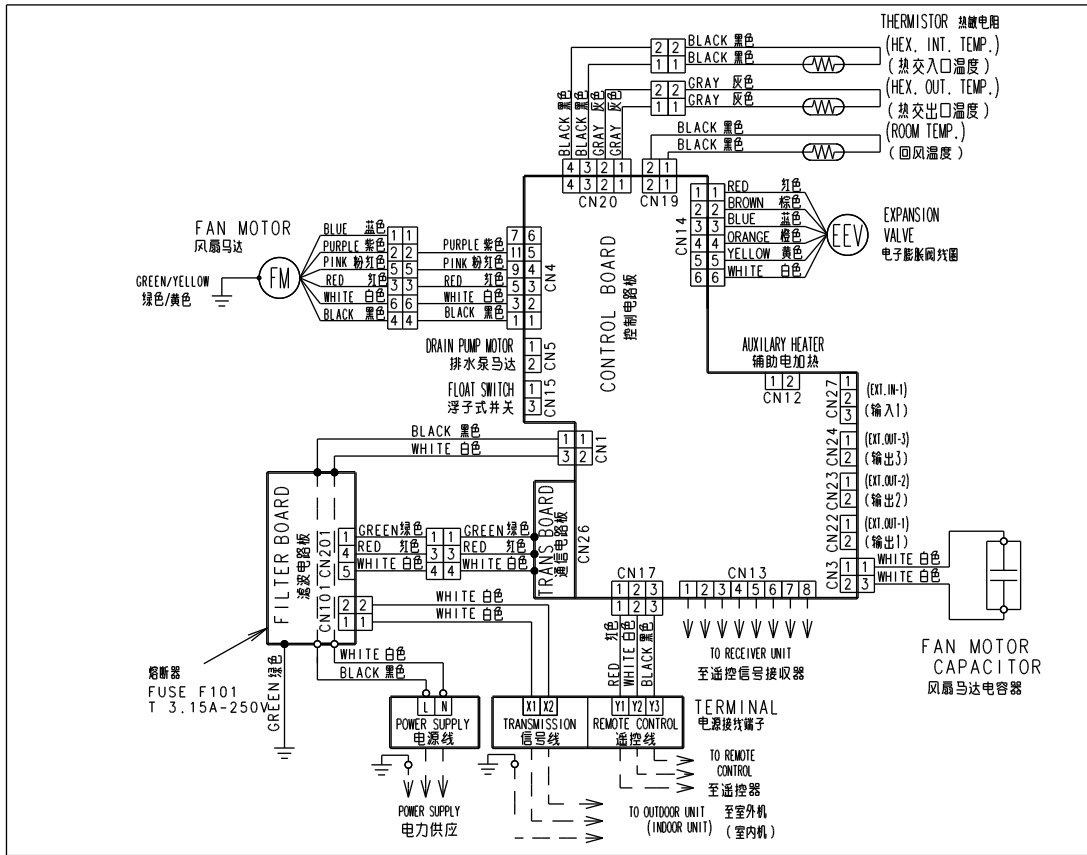
**MODELS : ARXB30, ARXB36**



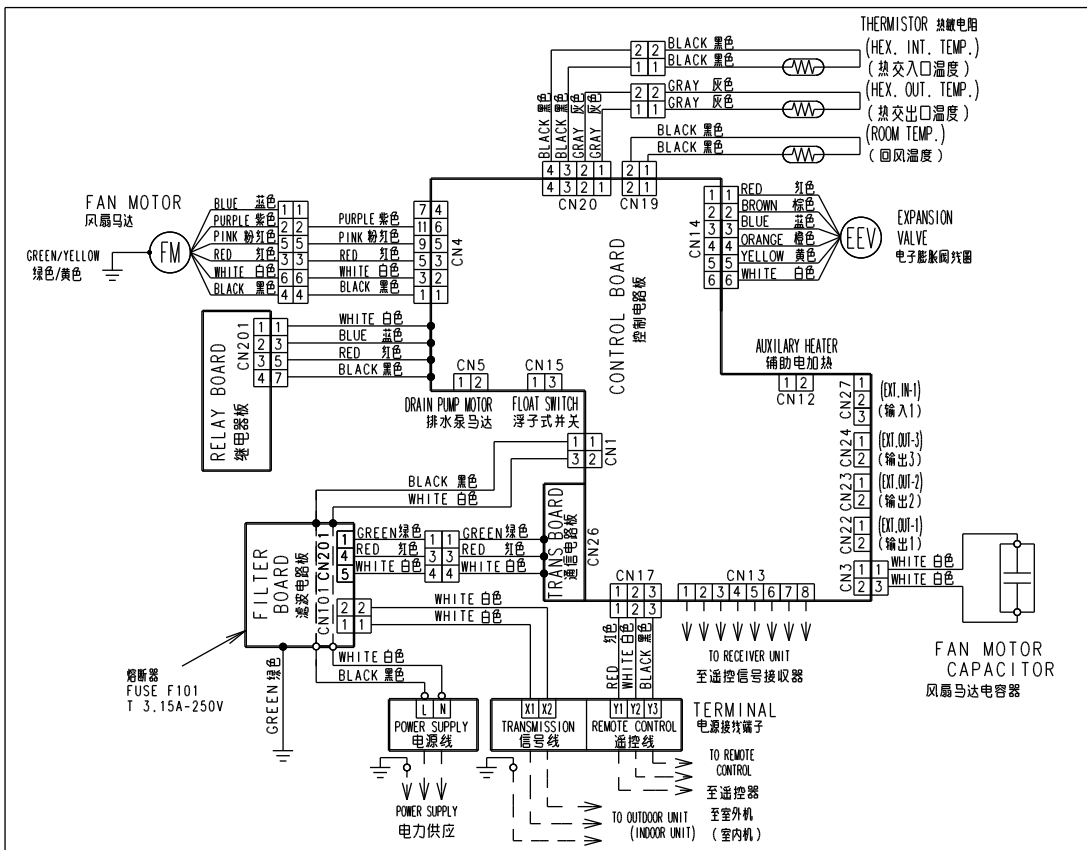
MODEL : ARXB45



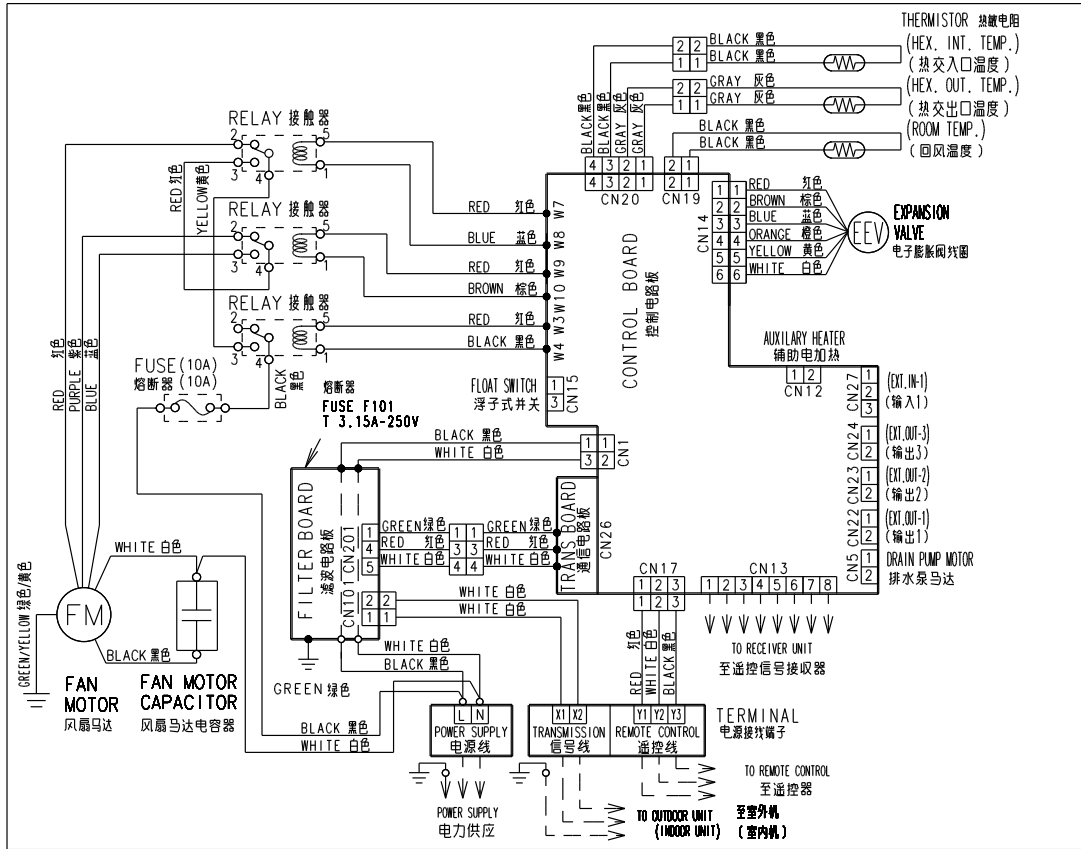
## MODEL : ARXA24



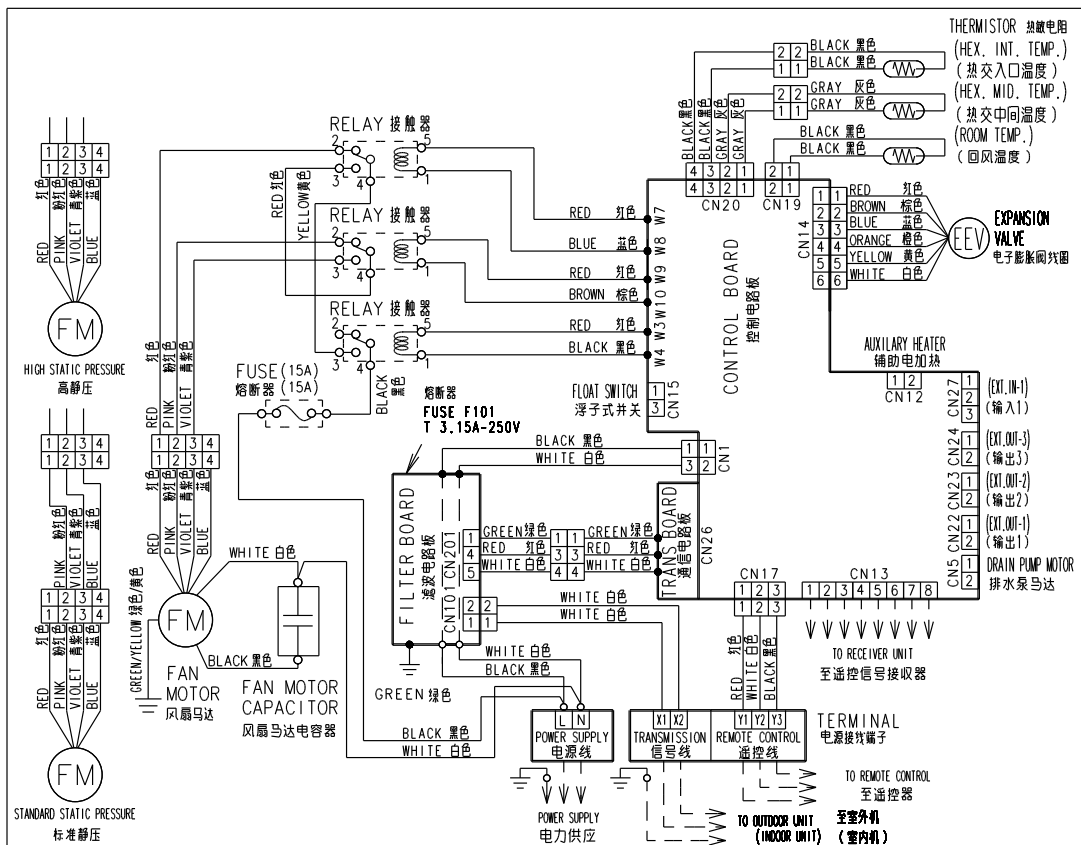
## MODELS : ARXA30, ARXA36, ARXA45



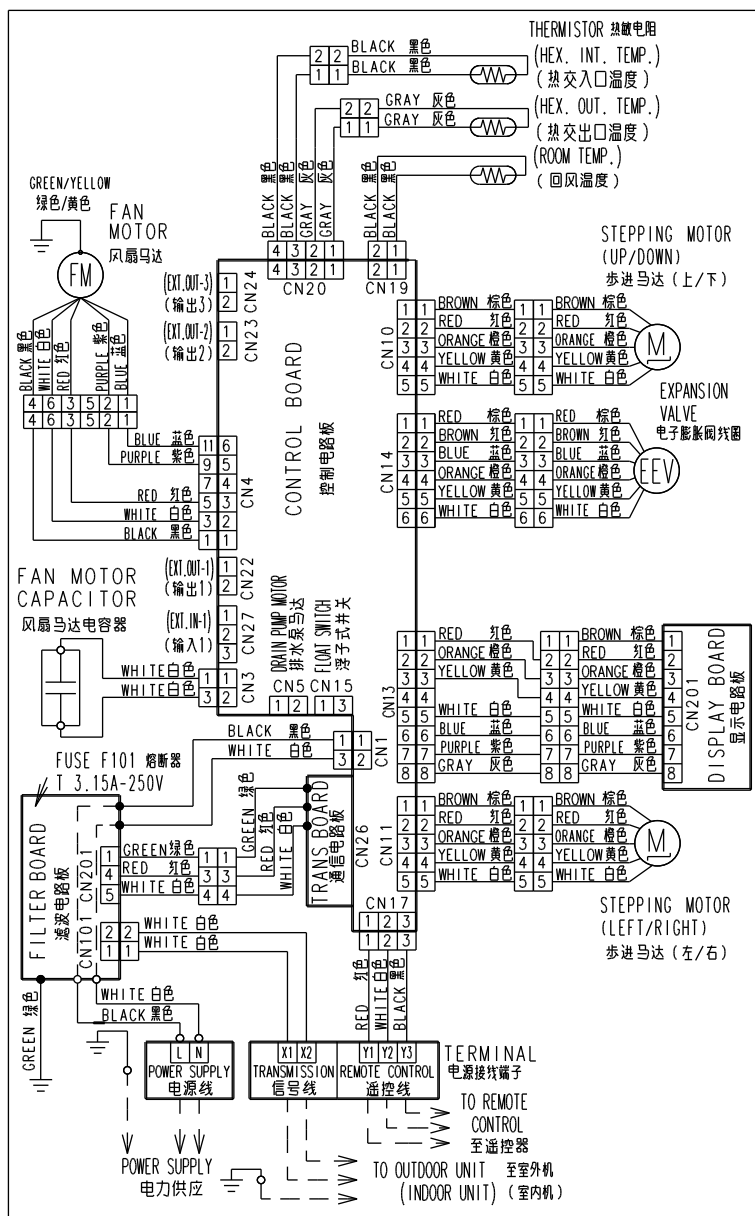
## MODELS : ARXC36, ARXC45, ARXC60



## MODELS : ARXC72, ARXC90

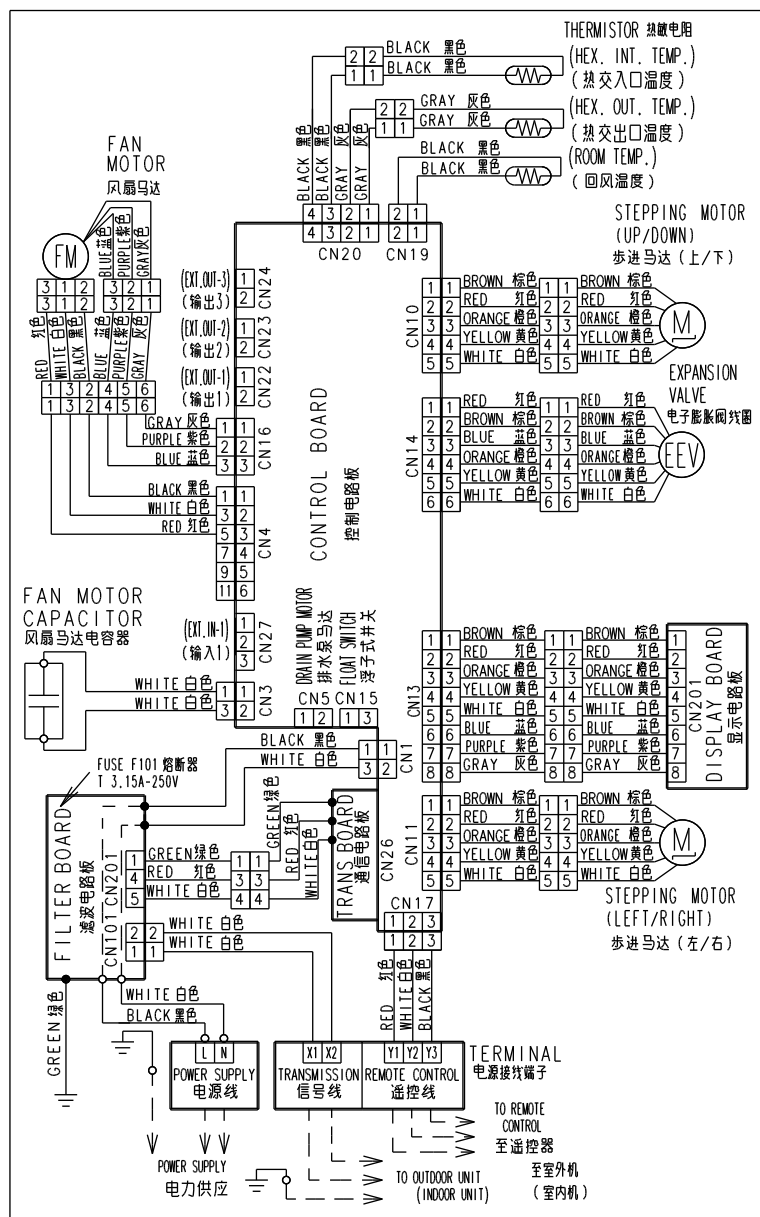


# MODELS : AB\*A12, AB\*A14, AB\*A18, AB\*A24

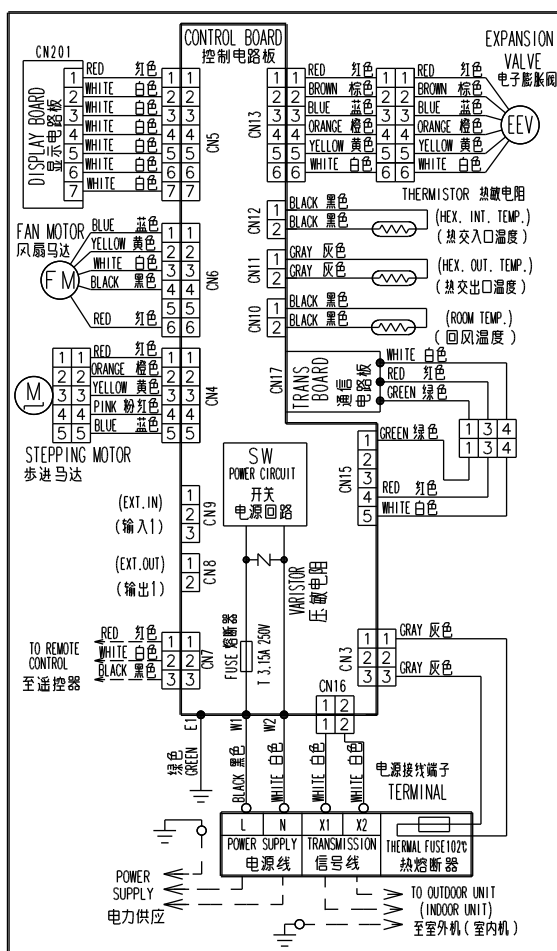




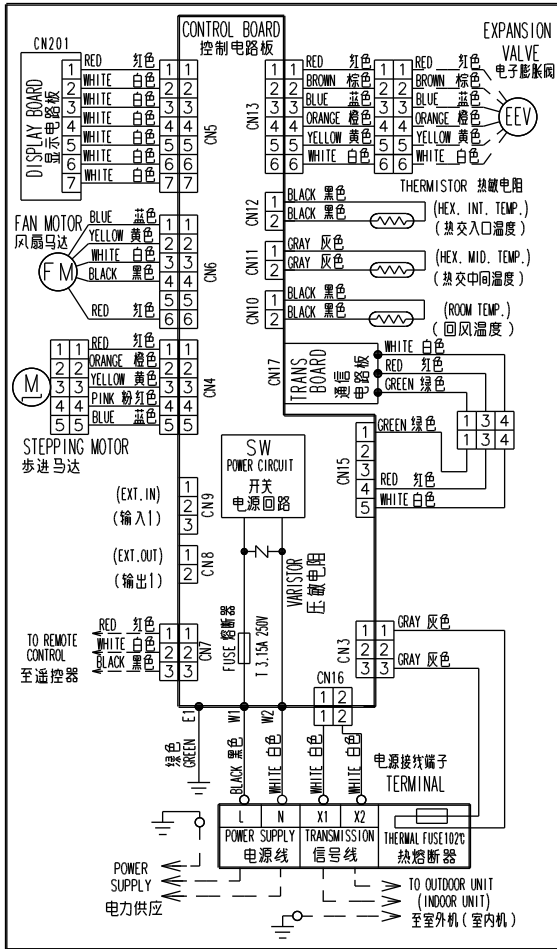
# MODELS : AB\*A30, AB\*A36, AB\*A45, AB\*A54



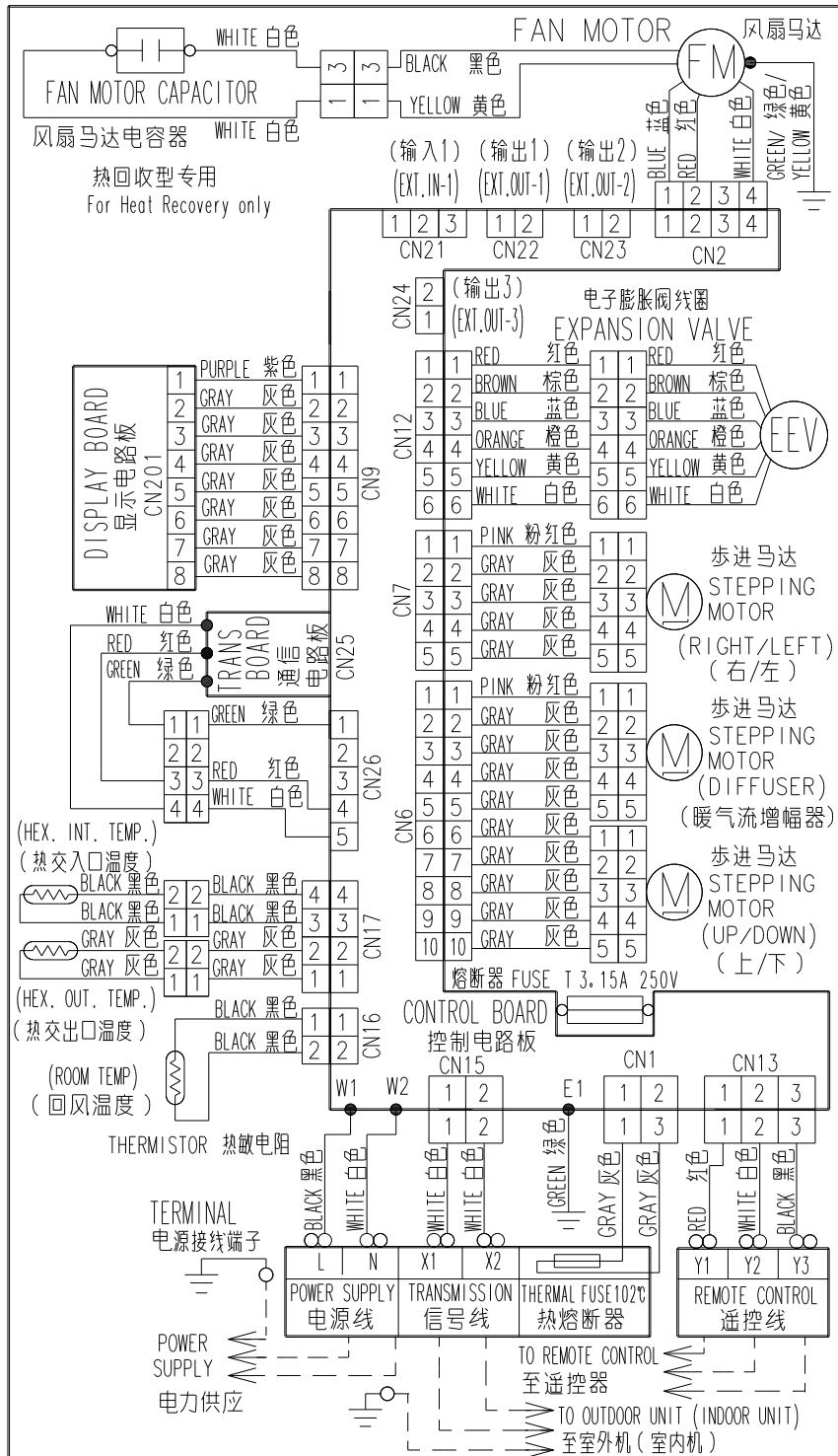
**MODELS : AS\*A07, AS\*A09, AS\*A12, AS\*A14**



**MODELS : AS\*E07, AS\*E09, AS\*E12, AS\*E14**

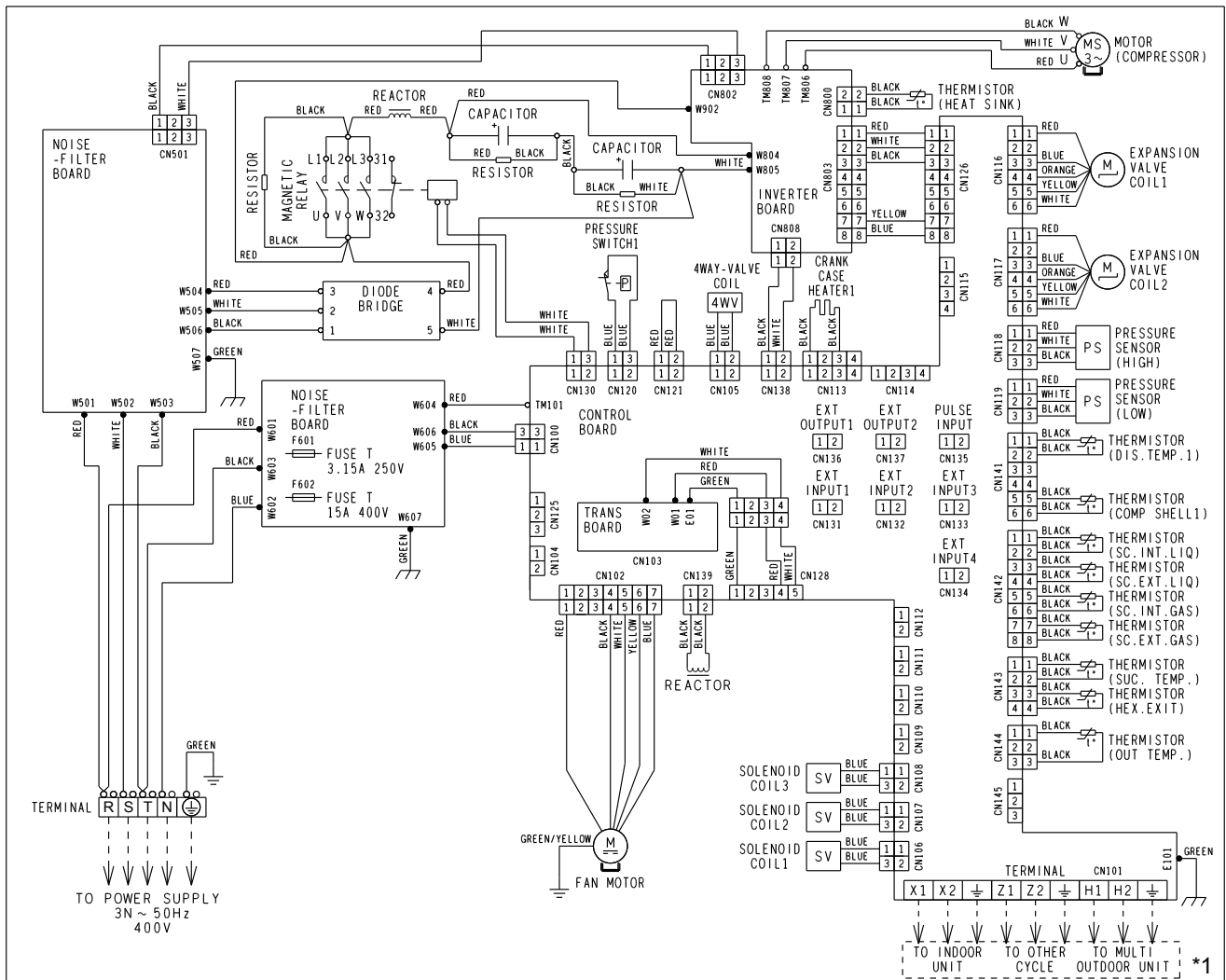


# MODELS : AS\*A18, AS\*A24, AS\*A30



## 5-2-2 Outdoor Unit

**MODELS : AJ\*A72LALH, AJ\*A90LALH**



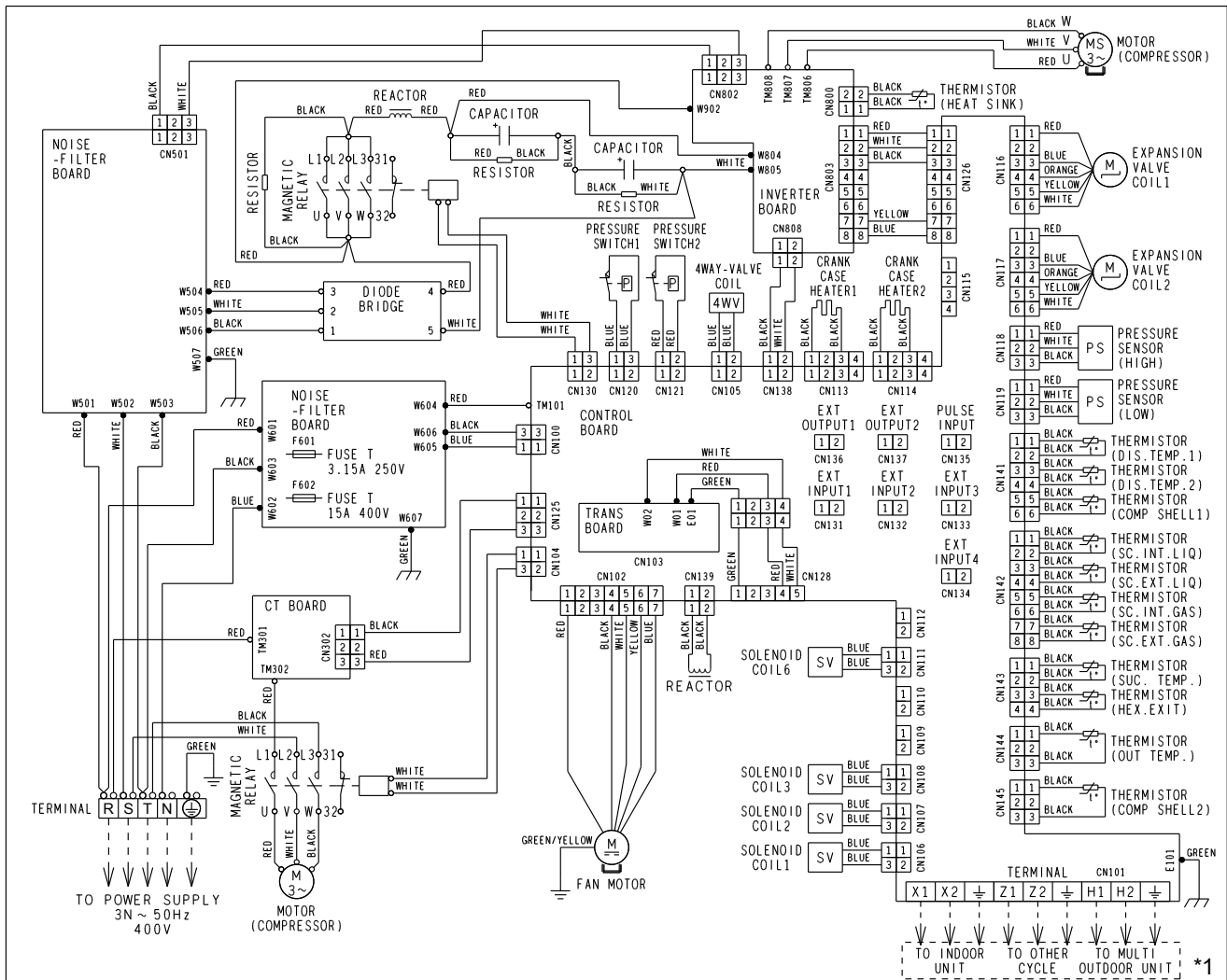
**Note : \*1**

**X1, X2 : To be connected to indoor units**

**Z1, Z2 : To be connected to other master outdoor unit**

**H1, H2 : To be connected to outdoor unit within same refrigerant system**

# MODEL : AJ \*108LALH



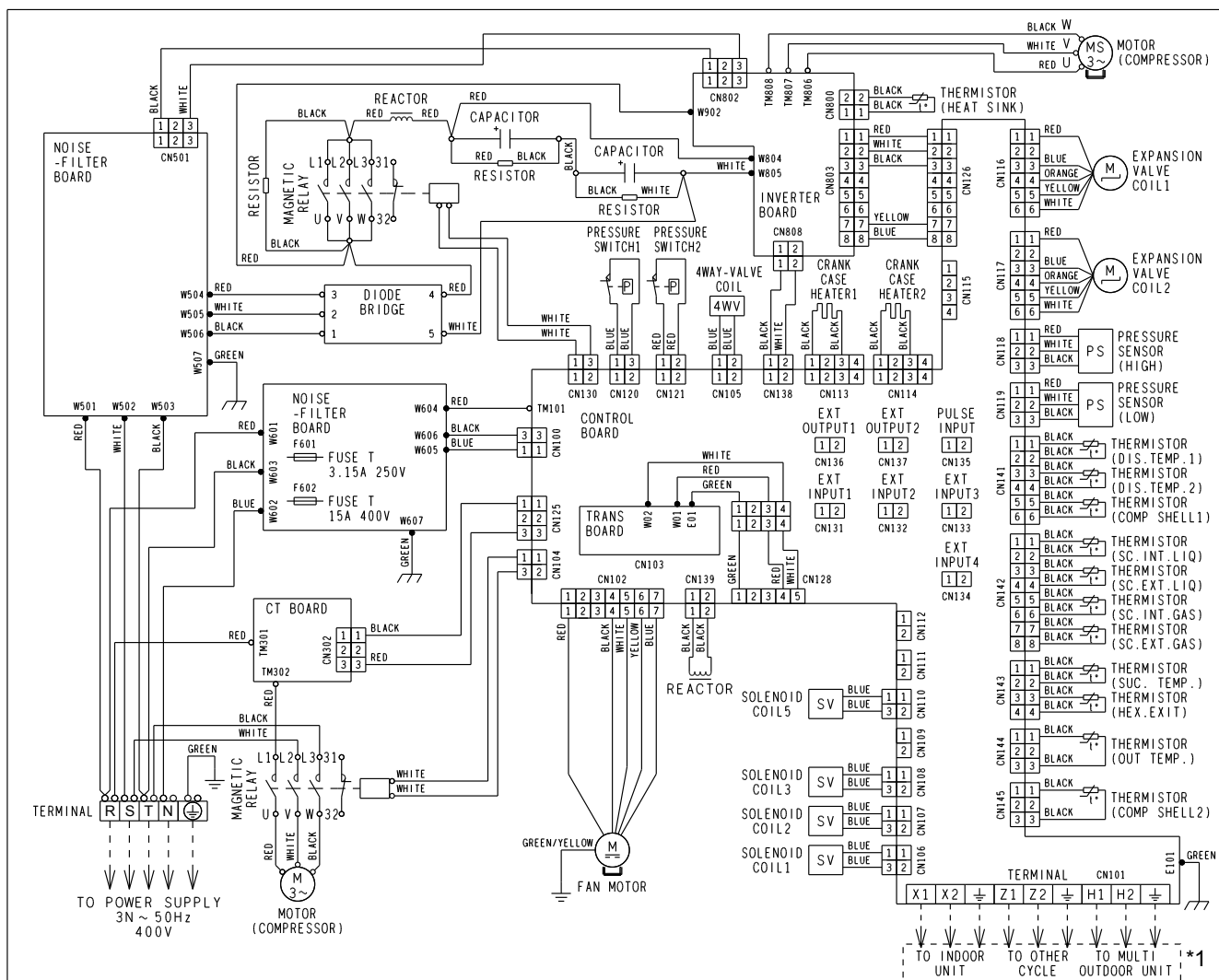
## Note : \*1

X1, X2 : To be connected to indoor units

Z1, Z2 : To be connected to other master outdoor unit

H1, H2 : To be connected to outdoor unit within same refrigerant system

# MODELS : AJ\*126LALH, AJ\*144LALH



## Note : \*1

X1, X2 : To be connected to indoor units

Z1, Z2 : To be connected to other master outdoor unit

H1, H2 : To be connected to outdoor unit within same refrigerant system